



BELL RINGS CONTINUOUSLY

EMERGENCY	LOCKDOWN
<ul style="list-style-type: none"> • Teachers and students cease activities immediately • Walk to the classroom, leaving all equipment and belongings behind • Teachers complete a roll call • Longneck Lagoon EEC teacher to check toilets and offices • Admin staff to notify appropriate emergency authority 	<ul style="list-style-type: none"> • Principal responsible for ordering lockdown procedures when a major threat is imminent • Principal or delegate will contact appropriate emergency services to explain threat and locations of student and staff • Teachers and students cease activities immediately • Walk to the classroom, leaving all equipment and belongings behind • Centre staff to secure doors and windows and pull down blinds. Students to sit on floor in middle of classroom. • Teachers complete a roll call, students • Longneck Lagoon EEC teacher to check toilets and offices if deemed safe • All-clear message to be relayed by Principal when appropriate
<p>Emergency / Fire / Police 000</p> <p>Hawkesbury Rural Fire Service 4575 1601</p> <p>Windsor Police 4560 6999</p> <p>Nirimba Office 9208 7611</p>	

Bushfire Emergency

Significant fire danger occurs in conditions of strong wind, high temperatures and dry vegetation. Fire can burn very rapidly through woodland and grassland of the National Park.

Should a fire emergency occur, Longneck Lagoon Environmental Education Centre staff will assist visiting teachers and students to follow the Bushfire Emergency Plan.

Strategies to mitigate risk

Catastrophic Fire Warning - Excursions to Longneck Lagoon EEC will be cancelled (Centre Staff to attend local school)

Closure of Scheyville National Park - Excursions to Longneck Lagoon EEC will be cancelled (Centre Staff at Centre, Cumberland Area Office NPWS notified of numbers on site)

Total Fire Ban – Activities proceed as usual with care (No BBQs used)

Extreme conditions – The Principal of Longneck Lagoon EEC may cancel excursions due to predictions of high wind or high temperatures in negotiations with the visiting school.



Longneck Lagoon Environmental Education Centre
Bushfire Emergency Plan

**Bushfire notification received by
Centre Staff**

Notification recipient to radio all centre staff on UHF
channel 15.30

SAM to ring handbell continuously until first Centre staff
arrives at classroom

**Fire onsite or nearby identified by
Centre Staff**

Centre staff radio SAM with details
SAM rings 000 with details of fire and numbers on site

SAM to ring handbell continuously until first Centre staff
arrives at classroom

Time to evacuate

Students and all visiting staff to classroom
Staff to complete roll call

SAM to contact bus company requesting
pickup

Principal or delegate to ring visiting school
and inform Principal of actions taken

Students and visiting teachers to walk to
bus and return to own school or identified
Refuge Centre

Principal to inform Director (9208 7611) and
DEC WHS Unit (9707 6225)

Centre staff to evacuate safely as directed
by Principal or delegate – leaving main gate
unlocked

Principal to notify NPWS (4572 3100) and
RFS (1800 679737) that site is evacuated

NO time to evacuate

Students and all visiting staff to classroom
Staff to complete roll call

SAM to ring 000 and notify number of people
on site

Principal or delegate coordinates drinking
water, towels and first aid kit in classroom.
Ensure UHF radios and mobiles are on hand

Principal to inform Director (9208 7611) and
DEC WHS Unit (9707 6225)

Follow advice and instructions from
emergency services

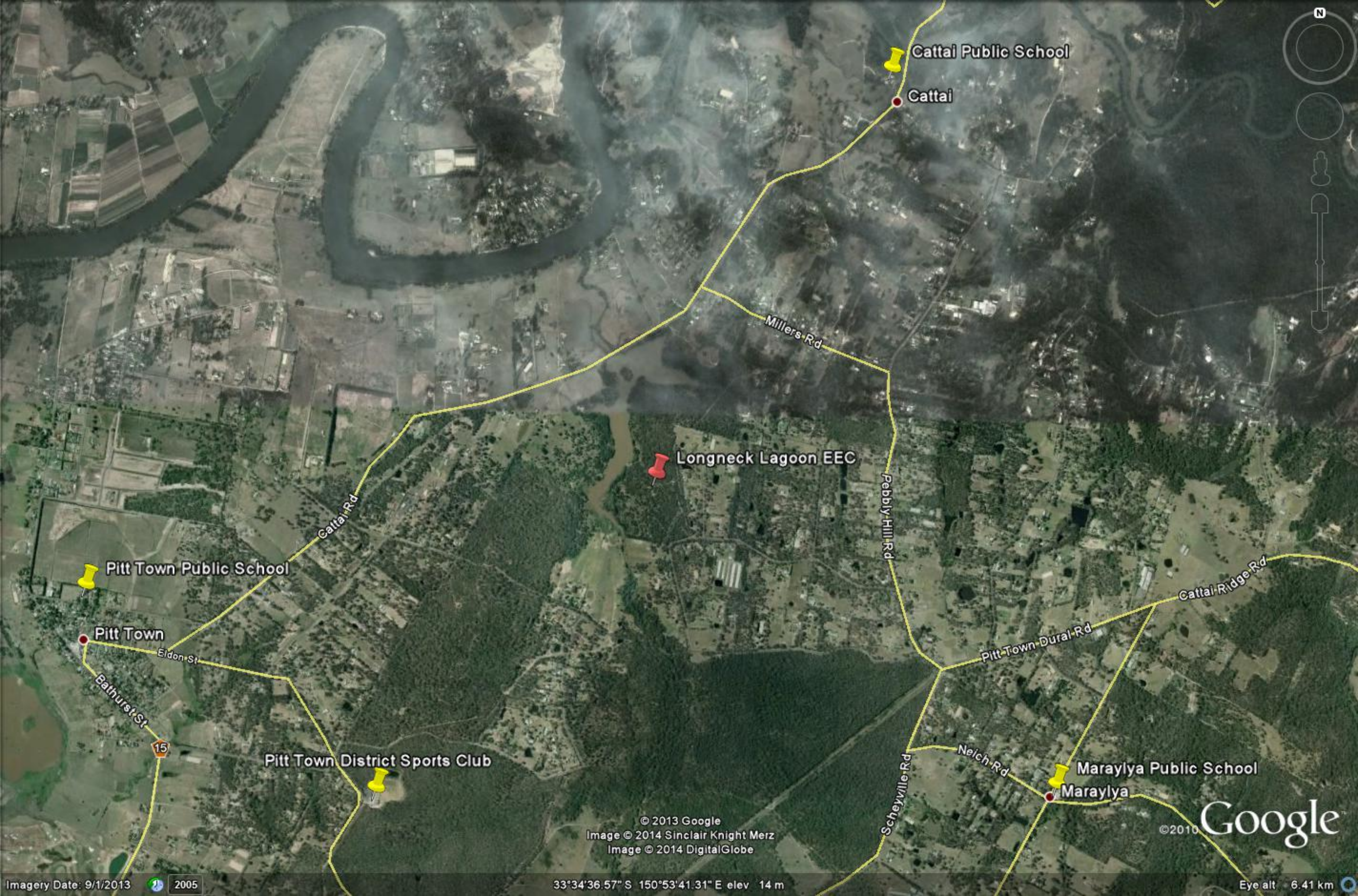
Refuge Areas

Pitt Town Sports Club, 139 Old Pitt Town Road,
Pitt Town, 4572 3658

Pitt Town Public School, Buckingham Street, Pitt
Town, 4572 3126

Cattai Public School, 487 Cattai Road, Cattai,
4572 8445

Maraylya Public School, Neich Rd, Maraylya,
4573 6243



Cattai Public School

Cattai

Longneck Lagoon EEC

Pitt Town Public School

Pitt Town

Pitt Town District Sports Club

Maraylya Public School

Maraylya

Millers Rd

Pebble Hill Rd

Cattai Ridge Rd

Pitt Town Dural Rd

Scheyville Rd

Neich Rd

Cattai Rd

Eldon St

Bathurst St

15

© 2013 Google
Image © 2014 Sinclair Knight Merz
Image © 2014 DigitalGlobe

© 2010 Google

Imagery Date: 9/1/2013 2005

33°34'36.57" S 150°53'41.31" E elev 14 m

Eye alt 6.41 km